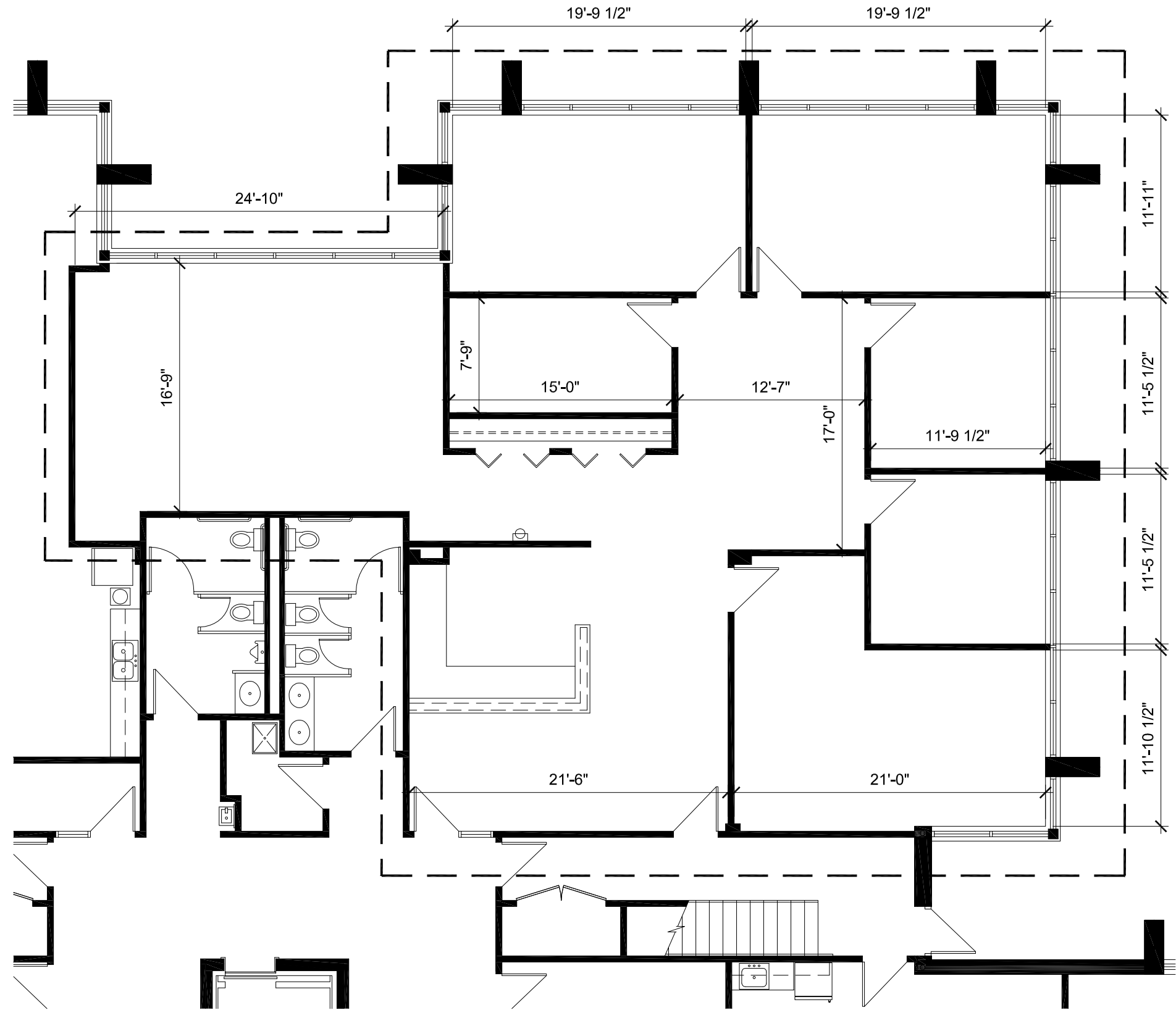


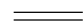


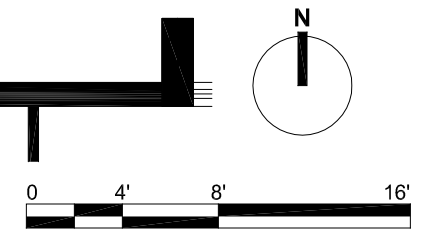


2,760 RSF



-  EXISTING WALL TO REMAIN
-  DEMOLITION WALL
-  NEW WALL
-  NEW DOOR
-  EXISTING DOOR TO REMAIN



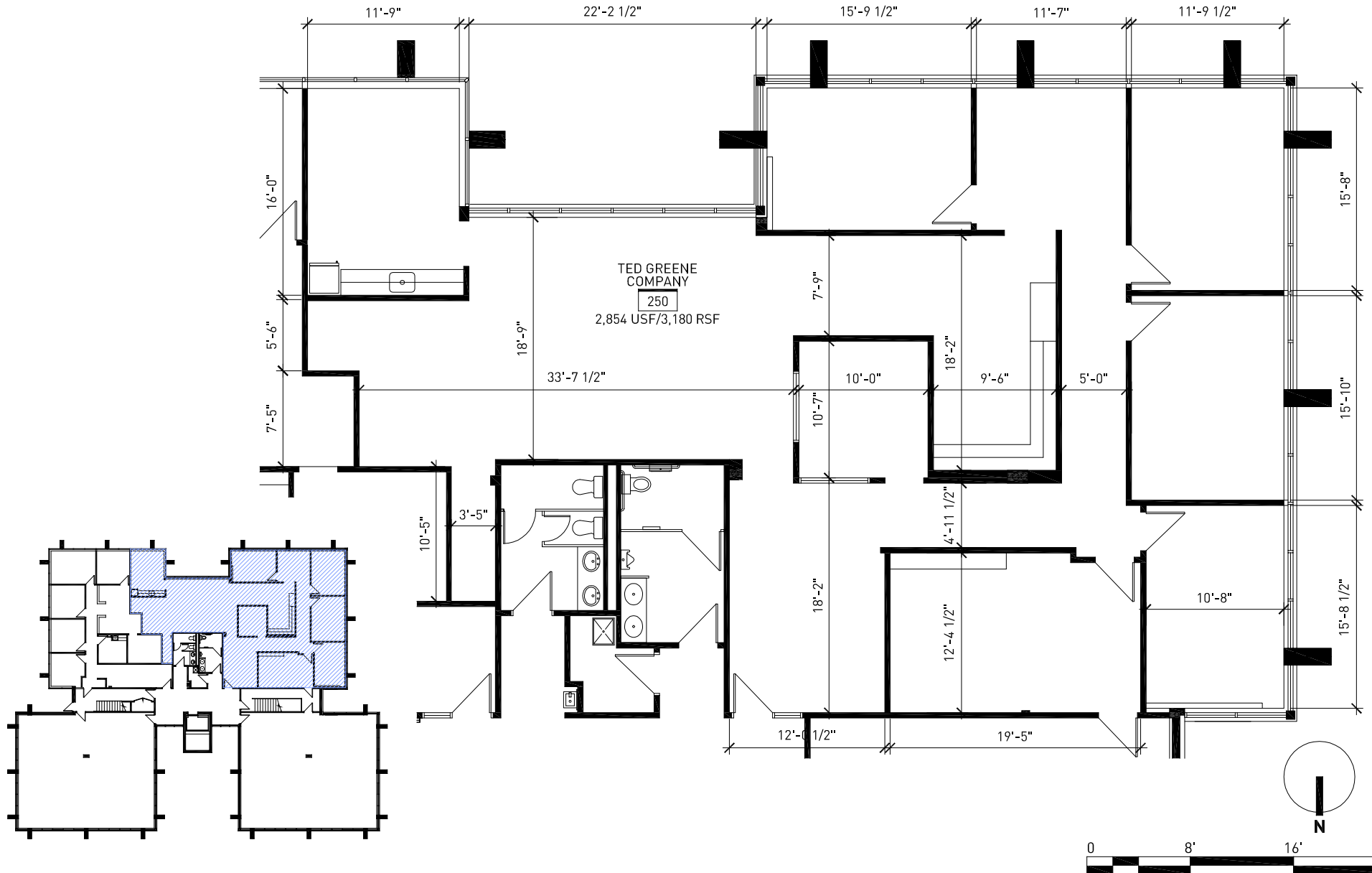
2000 SHAWNEE MISSION PARKWAY
STE 100 MISSION WOODS, KS 66205
TEL 816 502 1500 FAX 816 842 1878

PROJECT
SUITE 140

1ST FLOOR
6750 WEST 93RD STREET
OVERLAND PARK, KS

SCALE 1/8" = 1'-0"
MASTER PLAN

| | |
|-------------------------------|---|
| PROJECT NUMBER 2016310.000 | © 2016 Rees Maiborff Turkey Architects, LLC All rights reserved. No part of this document may be reproduced or utilized in any form without the prior written authorization of Rees Maiborff Turkey Architects, LLC. |
| SHEET AUTHOR E.COATS | SHEET NUMBER 1ST |
| DATE SEPTEMBER 20, 2016 | RMTA.BIZ |



2000 SHAWNEE MISSION PARKWAY
 STE 100, MISSION WOODS, KS 66205
 TEL 816 502 1500 FAX 816 842 1878

PROJECT
SUITE 250

6750 W 93RD
 OVERLAND PARK, KS

SCALE 3/32" = 1'-0"

MASTER PLAN

PROJECT NUMBER
 08000

SHEET AUTHOR
 E.COATS

DATE
 FEBRUARY 17, 2012

© 2012 Rees Mastlonski Turley Architecture, LLC
 All rights reserved. No part of this document may be reproduced or utilized in any form without the prior written authorization of Rees Mastlonski Turley Architecture, LLC.

SHEET NUMBER

A-250